

INTEGRAL TRAINING INSTITUTE LTD

SEAT: 21, Lees Street, Curepipe, MAURITIUS, POSTAL ADDRESS: PO Box 226, Curepipe, MAURITIUS.
Tel: (230) 674 4150, (230) 670 4354, Fax: (230) 676 5789, E-Mail: integral@intnet.mu URL:- <http://www.itilmu.net>

REDUCE OPERATION & ENERGY COSTS AND BE THE MOST PRODUCTIVE & COMPETITIVE BY TRAINING YOUR STAFF ON:

EFFICIENT OPERATION & MAINTENANCE OF BOILERS



If your industry is equipped with a boiler, then this course is a must. You may be wasting fuel unnecessarily and costing you a lot in various ways (pressure from clients and authorities, increased cost of fuel, regular breakdown of boiler and steam systems, low production, etc.) You will be surprised to note that all these undesired conditions can be avoided by simple actions with negligible costs. **SAVINGS OF UP TO Rs.200,000/MONTH IS ACHIEVABLE.**

It is a fact that due to poor boiler operation, many industries have suffered severe production losses resulting to closure.

On the other hand, with **increasing fuel costs** and rising **pressure from authorities and major overseas clients**, there is a strong need to take remedial actions wherever possible to obtain enhanced performance from your boiler and steam system.

We are pleased to inform you that we have designed a very interesting training package aimed at promoting cleaner and more efficient usage of fuel/Energy within industry which will help to reduce costs, to satisfy the requirements of clients, auditors and authorities. The course makes generous use of many illustrations, video clips, slides and worked examples, and will be highly beneficial to those handling and using Wood, coal, heavy oil, Furnace oil and diesel.

The course is **already MQA-approved** and the cost per participant is **Rs8,000/-**.

ONE DAY INTENSIVE COURSE

DATE: APRIL 21, 2026

VENUE: Integral Training Institute Ltd, Curepipe

The target audience is *Maintenance & Production Managers, Production staff, Supervisors, Boiler Technicians and Operators.*

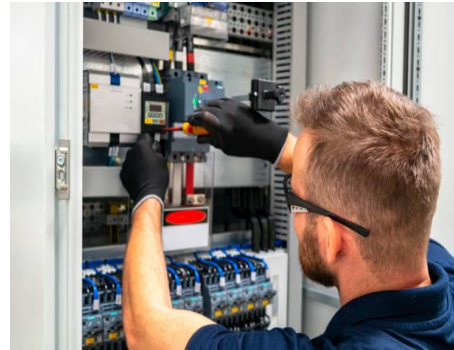
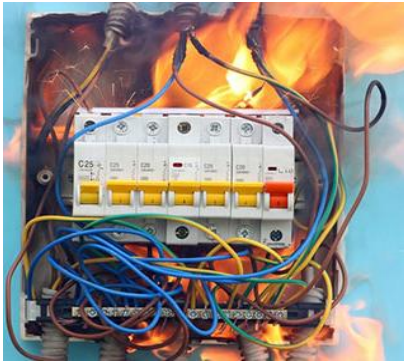
INTEGRAL TRAINING INSTITUTE LTD

SEAT: 21, Lees Street, Curepipe, MAURITIUS, POSTAL ADDRESS: PO Box 226, Curepipe, MAURITIUS.
Tel: (230) 674 4150, (230) 670 4354, Fax: (230) 676 5789, E-Mail: integral@intnet.mu URL:- <http://www.itilmu.net>

MEET THE REQUIREMENTS OF INSURERS, AUDITORS AND CLIENTS REGARDING ELECTRICAL SAFETY

MANAGEMENT OF ELECTRICAL SAFETY

A VALUABLE TRAINING WORKSHOP FOR INDUSTRIES



Poor Management of electrical safety can lead to:

- Catastrophic fires: Almost 60% of fires are caused due to electrical faults. A fire in a textile industry will spread within seconds causing significant damage to the products, machines and buildings, and even fatalities.
- Premature damage of equipment, Electrocution, etc.

Eventually, this will also result in loss of orders, production delays, failure in audits, fines with authorities, etc. Managers & Supervisors should ensure that their installations comply to the relevant standards and legislations, and all electrical works are carried out safely.

This requires regular electrical compliance testing (Records of the results of some 14 specific tests must be kept readily available to attest such compliance.) and also implementation of a range of procedures and arrangements. **It is now in fact a mandatory requirement for Insurers, Auditors and Clients in many Countries.**

The Course "MANAGEMENT OF ELECTRICAL SAFETY" has been designed to ensure candidates understand:

- *the importance of electrical safety,*
- *how electrical compliance testing should be carried out (including earth resistance tests, RCD tests, Thermography, etc.), and*
- *The range of procedures & arrangements that should be developed & implemented to ensure proper management of electrical safety.*

Course Contents:

1. Importance of electrical safety & what is a proper electrical installation
2. Which vital information about the installation should be kept and maintained
3. Who should inspect & test the installation, and how often
4. Why should the tests be carried out & How they are performed (with demo on the different tests)
5. What are the other requirements to achieve a safe installation
6. An update on tools, and equipment

TARGET AUDIENCE: Electricians, Technical Staff, Maintenance Officers & supervisors, Managers, Health & Safety Officers, etc. Fees per participant: **Rs. 8,000 {MQA approved } (ONE DAY INTENSIVE COURSE).**

Date: APRIL 23, 2026

Venue: Integral Training Institute Ltd, 21, Lees Street, Curepipe

INTEGRAL TRAINING INSTITUTE LTD

SEAT: 21, Lees Street, Curepipe, MAURITIUS, POSTAL ADDRESS: PO Box 226, Curepipe, MAURITIUS.
Tel: (230) 674 4150, (230) 670 4354, Fax: (230) 676 5789, E-Mail: integral@intnet.mu URL:- <http://www.itilmu.net>

STRENGTHENING PRODUCTIVITY AND PROFITABILITY THROUGH EFFECTIVE HEALTH & SAFETY MANAGEMENT IN INDUSTRIES

Safe workplaces are more efficient, more stable, and more profitable.

Textile & Process industries operate in a highly competitive environment where productivity, compliance, and cost control are critical to business success.

Common hazards in industries can significantly impact productivity and profitability.

Effective Health & Safety Management not only protects workers but also reduces downtime, improves compliance with international Clients, Insurers and Auditors, and strengthens your company's competitive position in the global market.

Effective Health & Safety training is the FIRST STEP to be taken to ensure an effective health & safety management in place.

The following One intensive day course will prove to be beneficial to your organisation:



“MANAGING HEALTH & SAFETY RISKS”

Aims

This course is aimed at all managers and supervisors in all businesses. The knowledge gained from the course facilitates effective and safe management in line with best practice. It is also designed to help participants review their own departmental systems for safety and to introduce new controls and necessary changes to ensure safety in the workplace.

Who should attend?

Managers, supervisors and HS committee members from all industry sectors who require a broad based knowledge of health and safety and safe systems of work.

What will they learn?

- Importance of Health and Safety at work
- Legal Compliance, Health & Safety Documentation, & Recent updates in Health and Safety Legislative Framework
- Risk Assessment and risk control
- Near Miss and reporting procedures
- Effective Accident Investigation
- Developing and Implementing Safe system of Work and Permit to Work Systems
- Proactive & Reactive Monitoring
- Responsibilities of Employer/Employees
- Communication, Consultation & Health and Safety Committee

Course duration: Date: APRIL 28, 2026, Venue: Integral Training Institute Ltd, 21, Lees Street, Curepipe

Fees: Cost per participant: Rs 10,000/-.

A single serious accident can cost significantly more than investing in proper Health & Safety training. Participants are strongly advised to make an early booking by forwarding advance payment and participation details one week before the scheduled date of the course.

For more information, please contact us on +230 674 4150 or consult our website (www.itilmu.net).

Yours faithfully,

Gawtum Jawaheer (CEng, FIMech E (UK), FIEM, CMIOSH (UK)) Director of Studies

INTEGRAL TRAINING INSTITUTE LTD

SEAT: 21, Lees Street, Curepipe, MAURITIUS, POSTAL ADDRESS: PO Box 226, Curepipe, MAURITIUS.
Tel: (230) 674 4150, (230) 670 4354, Fax: (230) 676 5789, E-Mail: integral@intnet.mu URL: <http://itilmu.net>

PARTICIPATION FORM

(May be photocopied for multiple applications)

The Director
Integral Training Institute Ltd
21, Lees Street
Curepipe,
Mauritius

This is to confirm that we are delegating the following participant to attend your training seminar which will be held at

VENUE:

DATE & TIME:

COURSE TITLE:

PARTICIPANT'S NAME:

PARTICIPANT'S POSITION:

PARTICIPANT'S MOBILE NUMBER:

COMPANY NAME:

TELEPHONE:

FAX:

Name of Delegating Officer:

Positon Held:

Contact Number:

Signature: